



**LAMCODE**

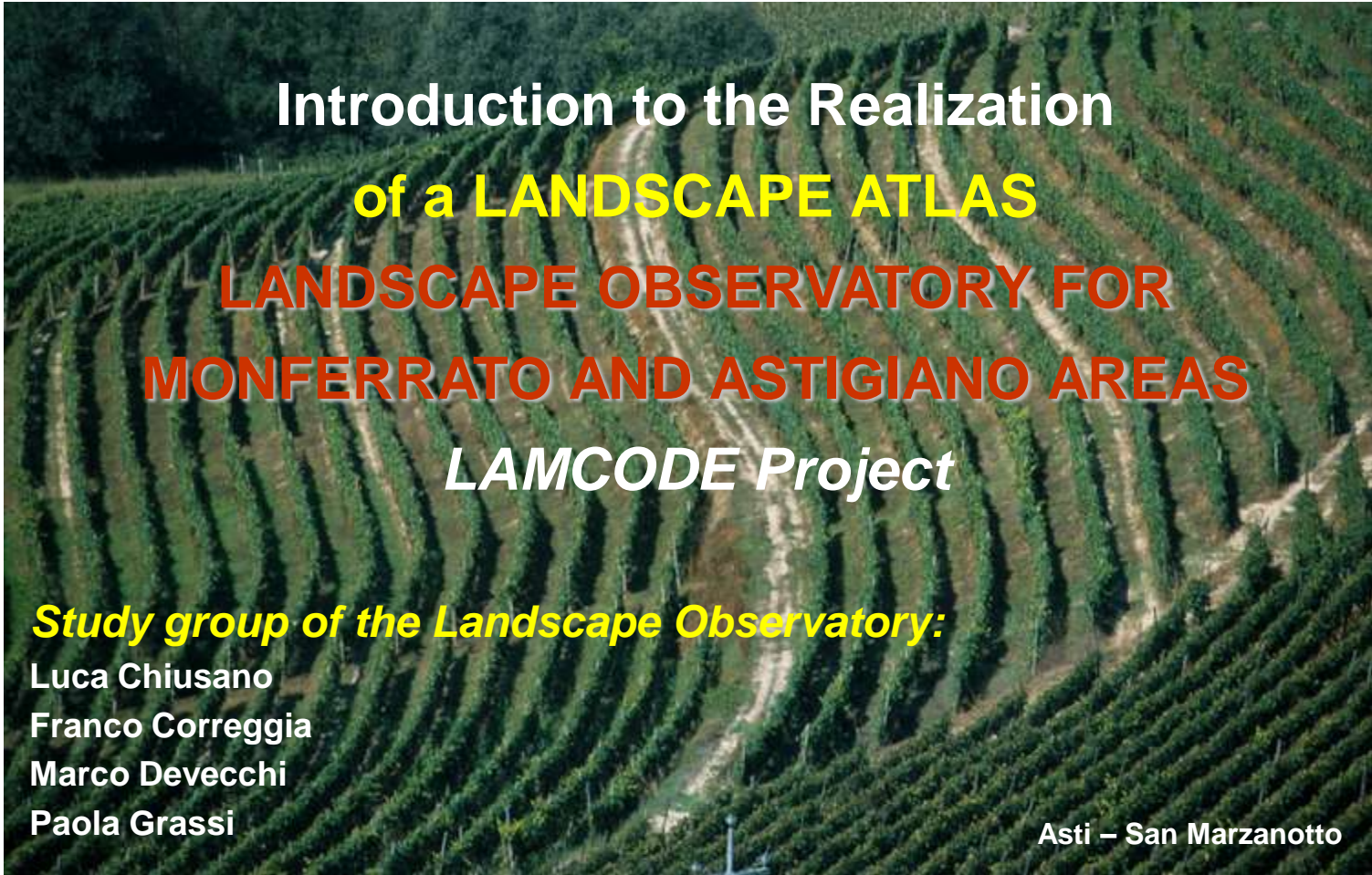
Landscape management  
for countryside development

[www.lamcode.eu](http://www.lamcode.eu)

**FINAL MEETING**  
**15th – 16th October 2007 - Asti**

*Comune di Asti*





**Introduction to the Realization  
of a LANDSCAPE ATLAS  
LANDSCAPE OBSERVATORY FOR  
MONFERRATO AND ASTIGIANO AREAS  
LAMCODE Project**

***Study group of the Landscape Observatory:***

Luca Chiusano  
Franco Correggia  
Marco Devecchi  
Paola Grassi

Asti – San Marzanotto

[www.osservatoriodelpaesaggio.org](http://www.osservatoriodelpaesaggio.org)

## Landscape: community wealth

*The landscape has an important public interest role in the cultural, ecological, environmental and social fields, and constitutes a resource favourable to economic activity and whose protection, management and planning can contribute to job creation [European Convention for Landscape].*

Every landscape is the result of a special meeting between man and nature, between the **culture of a community** and the **physical characteristics of a territory**. Years ago, the reality of Asti and surroundings represented one of the most particular landscapes, culturally relevant at international level, finding in viticulture the core element connotating the territory.

Asti – San Marzanotto - Mongardino

**Landscape** is becoming every day more important in a new tourism related to the environment peculiarities and to the wine and food excellences.

Production linked to wellness and free time, like **wine**, absolutely need **places where to identify**, being their value strictly linked to the quality of the originary rural landscapes.


The Astigiano boasts **a huge variety of wine and food elements** recognized at international level, including several DOC and DOCG wines.

Castelnuovo Calcea (Asti)

Relating the product to the territory fully meets the actual trends of **consumers-travellers** who choose tourist places looking for environment-cultural richness together with the wine and food aspects.

In this view, a good **landscape** should be *attractive and harmonious and orderly*, but not monotonous.

Asti – Viatosto



This wealth is so important that can ask for the **higher awards**, also from Unesco, starting the series of actions addressed to a real and sustainable development of the territory.

Anyway, changes that are taking place in the territory appear radical and can put at risk the survival of **rich and deep relationship between places and community**.

Montiglio (Asti)



Cultural **Globalization**, in terms of behaviour homologation, of life patterns, also reflects on the concrete landscape transformations, simplifying and compromising the way of reading the past.

## How to intervene?

There is no doubt that in order to limitate this trend is compulsory to evaluate peculiarities and typicality of the places, considering them as a richness.

Coazzolo (Asti)

We need to quickly realize a precise and puntual **census** of the **landscape wealth** of the area of Asti, leading at creating a

## LANDSCAPE ATLAS

for an easy on line consultation, so that the Asti community could confidently get to it.

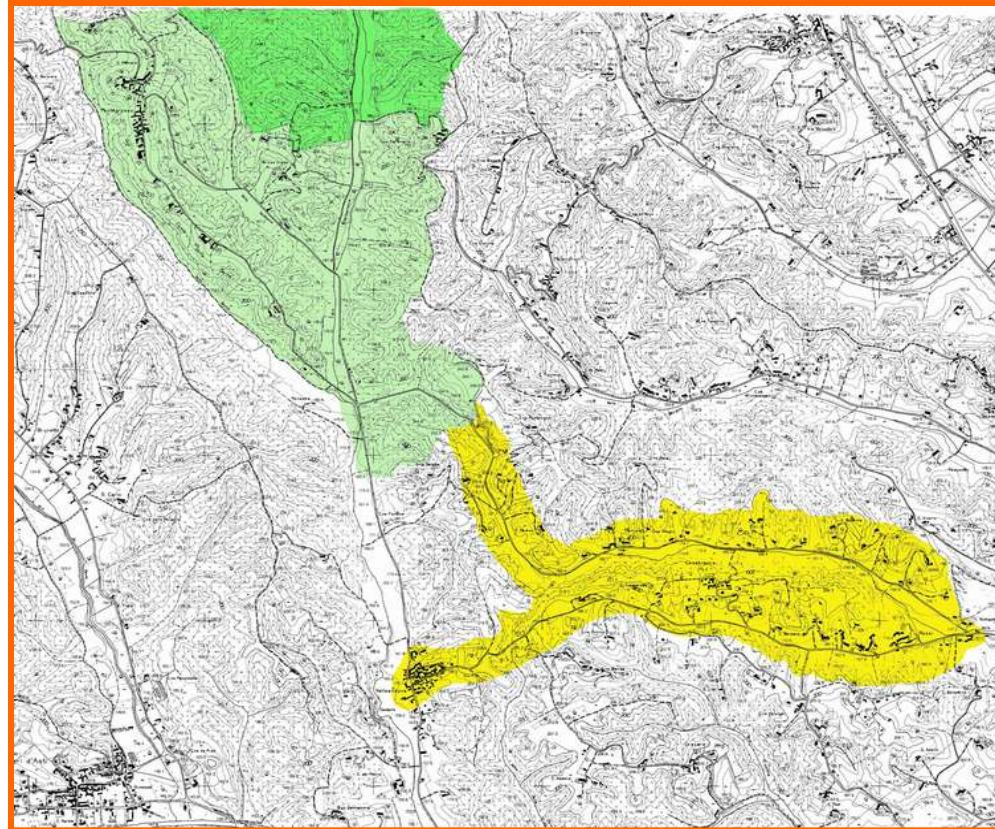
This **catalogue** of the Asti landscapes represents, like for the other historical-artistic goods, an essential tool for knowing and protecting them.

Costigliole d'Asti



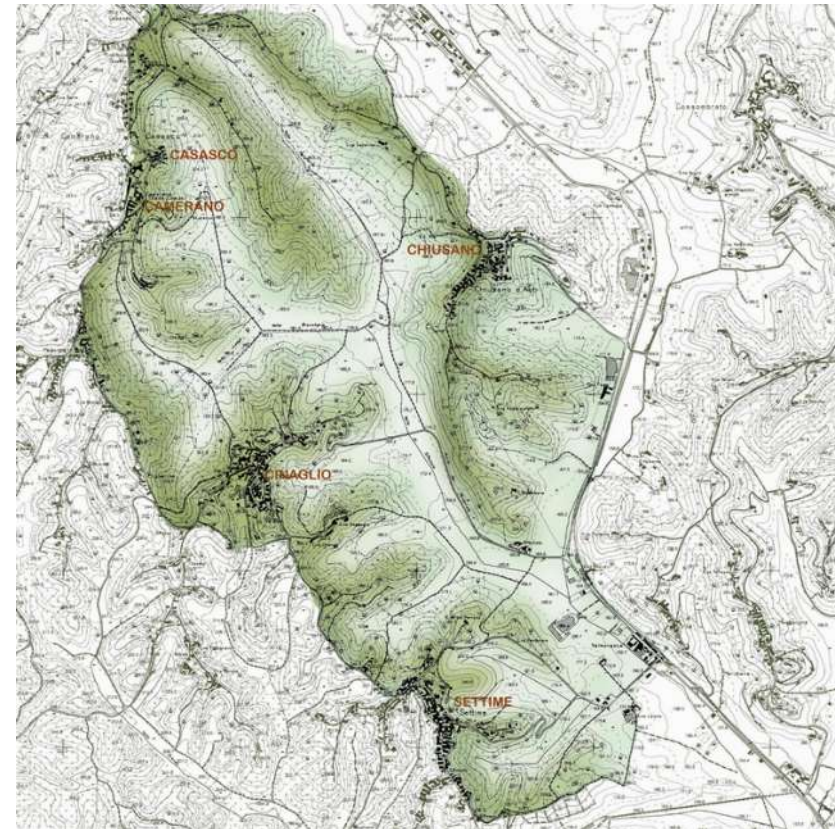
# METHODOLOGY

*Area of  
interest for  
the study  
in the  
Lamcode  
project*



**Asti – Valleandona – Casabianca – Valle Manina – Valle Botto**

In order to offer an application of the reading method and an evaluation of the landscape, also in areas not undergoing specific protection restrictions, the interest for analysing a third area close to the previous ones and territorially situated in the municipalities of **Settime d'Asti, Chiusano d'Asti and Cinaglio** and represented by Valle San Michele, characterized by individual landscape values and environmental elements.



**Settime d'Asti, Chiusano d'Asti e Cinaglio**



## Activities carried out

The study includes a **capillary photographic shooting** of the landscape places of interest, but also of **environmental** and **historical-architectural kind** of the studied areas. The most relevant realities were also registered for their peculiar aspects, complementary to the photographic shooting.



*Valleandona (Asti)*

As far as landscape peculiarities are concerned, were found **potential views** existing in the selected areas, together with a photographic census of **landscape trouble** elements. Such elements were evaluated in comparison to historical photographic material coming from people of these places.

## *Environment*

*peculiarities*: a first preliminary bibliographic research for a correct arrangement of the sites studied (*climate, geology, fauna-vegetation*).



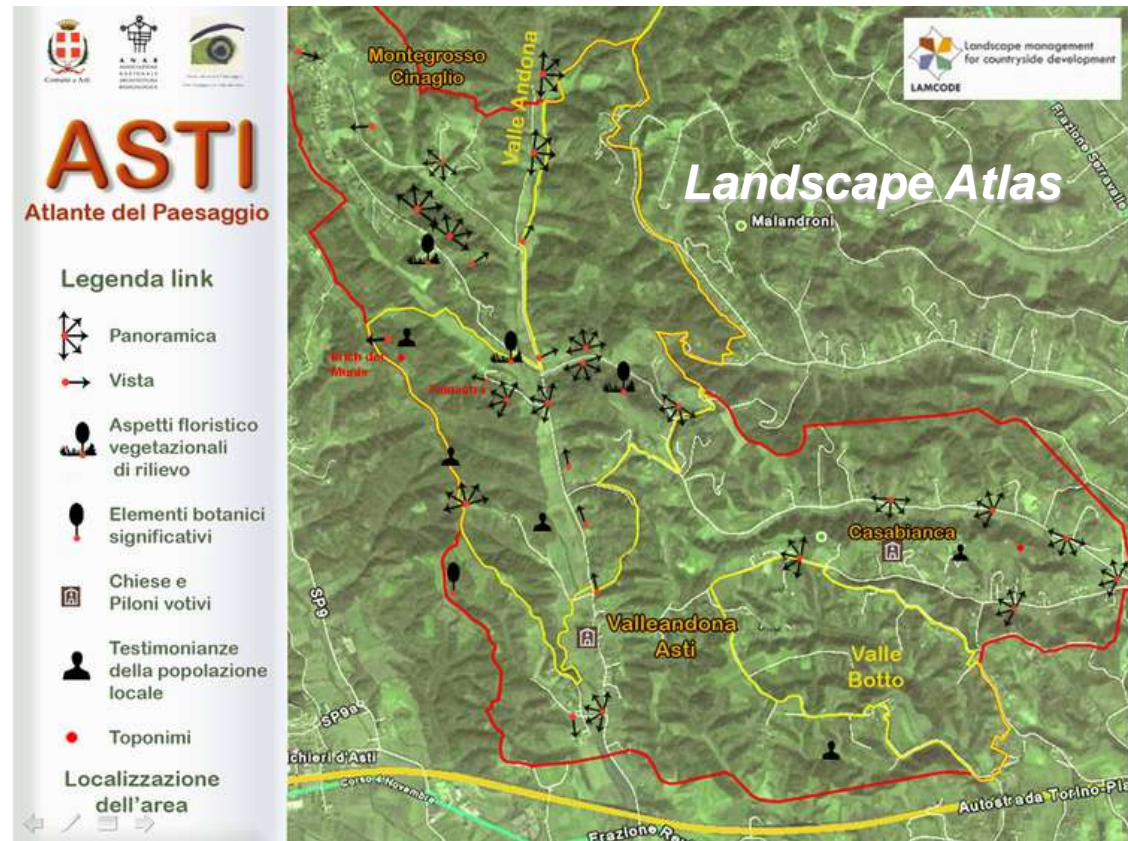
*Quercus robur*



*Humulus lupulus*

We also made a recognition in those areas for a photographic shooting of all the interesting **environment elements** but also in areas in degradation. Such elements were also evaluate in comparison to the historical photographic material coming from **the people of these places**.

**Material  
used: Regional  
Technique Maps  
– Provincial  
Maps –  
Municipality  
Maps).**



**Special informatic programme**, aiming at easily diffuse and consulte on the web or on informatic supports (CDs and/or DVDs).

The material was found visiting the selected areas and also by involving local people, for example in planned meeting, in order to get *photographic material* (of the past and of the present) realized by the same inhabitants.



[www.osservatoriodelpaesaggio.org](http://www.osservatoriodelpaesaggio.org)



# Operative consequences

The method used to realize the **Landscape Atlas**, aimed at involving local population since the very beginning, effectively underlined the existing peculiarities they knew themselves. This involvement is also effective when drafting **executive operative guidelines** fully shared by all the actors.

*Valleandona (Asti)*



**EUROPEAN CONVENTION FOR LANDSCAPE:** it is  
absolutely important for the population to be involved  
in all the initiatives aimed at knowing and managing  
their own landscapes.

*Valleandona (Asti)*

## CONCLUSION

We hope that this original and **innovative way of studying** could be **spread** among the same community organisms working at landscape managing policies. This analytic landscape model could also adapt to other context of the INTERREG project.

*Valleandona (Asti)*

# FIRST RESULTS



## AREA OF STUDY

- The area of study is in the Municipality of Asti, partially inside the Special Natural Reserve of Valle Andona, Valle Botto and Valle Grande and also in contiguous zones;
- Geomorfology: Asti Area Pliocene Basin (about 4-5 mil. years ago);
- During the Pliocene period sub-tropical sea submerged most of our territory;
- Phenomenon called “Tanaro’s fall” due to tectonic movements;



## ASTI SANDS

- Sedimentary formation: thickness of 60-80 metres, with yellowish sands locally sealed, generally homogeneous;
- Sea sediments at limited depth (5-30 metres) and controlled by the strong hydrodynamic energy of waves and coastal flow;
- Fossils are mainly represented by mollusc shells;
- Fossil formations known and studied at international level.

## GENERAL NATURE ASPECTS FLORA

- Vegetal formations characteristic in hills: mixed broad-leaf woods;
- Value elements: species like the Scotch pine;
- Good hygrophytic formations: *alneto* in Andona Valley;
- Anthropic impact: strong degradation and ecologic banalization for the presence of allochthonous species due to vineyard abandonment and improper wood management;



## GENERAL NATURE ASPECTS FAUNA

- Non-existent fauna census;
- Possible presence of wild pigs;
- Avifauna: high biodiversity, presence of predatory birds, bee-eaters, hoopoes, crows (jay, etc.), wood sparrows and many other families;
- Wood typical teriofauna: mustelids, foxes, rodents;
- Problems linked to ecological corridor;

## Franco Correggia

### Ecosystem variety and biological diversity preservation in rural hill areas close to Asti

- Peculiar aspects of landscape and ecomosaics of the hill systems in Asti.
- Compresence and density in hill countryside of biotopes and microambients ecologically diversified.
- Microsystemic emergences and preservation of residual contents about biodiversity and naturalness.
- Creation of nets and environmental mosaics able to form in coherent systems, the bioecological and anthropic components of the territory.

# THANK YOU FOR YOUR ATTENTION

## *Acknowledgment*

*Arch. Alessandro Boano and Dott.ssa Elisa Fracchia*

*Prof. Luigi Berzano*

*and to Valleandona population.*



**LAMCODE**

# Landscape management for countryside development

COMUNE DI ASTI - Piazza San Secondo, 1  
14100 Asti ITALY



Comune di Asti



ANAB  
ASSOCIAZIONE  
NAZIONALE  
ARCHITETTURA  
BIOECOLOGICA

Con il contributo di



Osservatorio del Paesaggio  
per l'Astigiano e il Monferrato

sportelloeuropa@comune.asti.it  
www.comune.asti.it

Arch. Demarchis Angelo  
T: 0039 0141 399661  
a.demarchis@comune.asti.it

Dott.ssa Elisa Fracchia  
T: 0039 0141 399384  
e.fracchia@comune.asti.it

